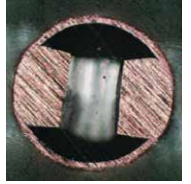


# Press-Fit Technology



## Solderless Interconnects

- Pluggable, repeatable, reliable
- Compliant high normal force technology; accommodates coefficient of thermal expansion mismatch



## Our Core Product Line

Product Family	Interplex Press-Fit Type	Picture	Finished PCB Hole Diameter (mm)	Insertion Force *	Push-out Force **
Mini	0.4 MiniPLX		Ø0.55 - 0.65	≤100 N	≥20 N
Mini	0.4 EON		Ø0.71 - 0.81	≤70 N	≥20 N
Signal	0.64 EON		Ø1.0 - 1.1	≤100 N	≥30 N
Signal	0.64HF EON		Ø1.0 - 1.1	≤150 N	≥50 N
Power	0.8 EON		Ø1.45 - 1.55	≤180 N	≥60 N
High Power	1.2 EON		Ø2.0 - 2.1	≤300 N	≥60 N

\* Thickness ≥1.6 mm, with Imm. Sn PCB

\*\* After storage at room temperature for ≥24 hours

### Customizable

Available in various sizes, materials, & plating finishes, tailor-made to your end application needs

### Qualified

Automotive qualified to IEC, SAE & many other customized performance requirements

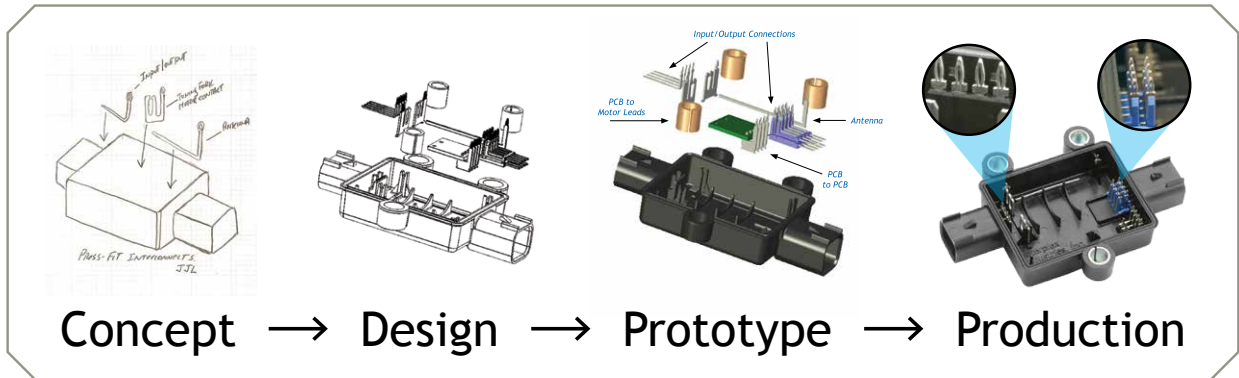
### Reliable

Many years of experience in custom applications; billions of our Press-Fits are in the field

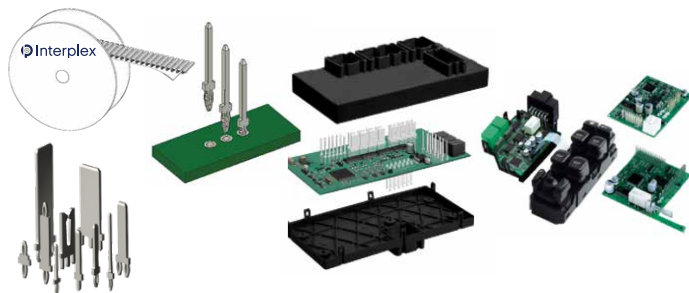
# Press-Fit Technology

## Applications

Power & EV, sensors & ADAS, high density & hybrid connectors, braking, electronic control, etc.

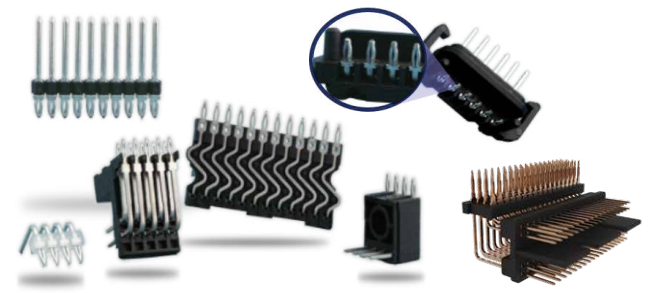


## Direct Insert Terminals



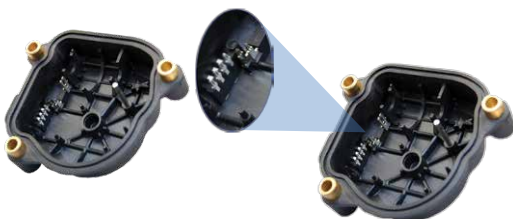
- Body control modules
- Power distribution centers
- Door & window switch modules
- Rear view mirrors

## Customized Connectors



- Header connectors for small control modules
- Switch assemblies
- Board-to-board stacking
- Wire-to-board connections

## Custom Molded Modules



- Control modules: Engine, brake, body, etc.
- Sensors: Airbag, pressure, etc.
- Actuator controls: Power steering, active suspension

## Power Lead Frames



- Wire-bondable Press-Fit connections
- Excellent flatness & positional tolerance capabilities

