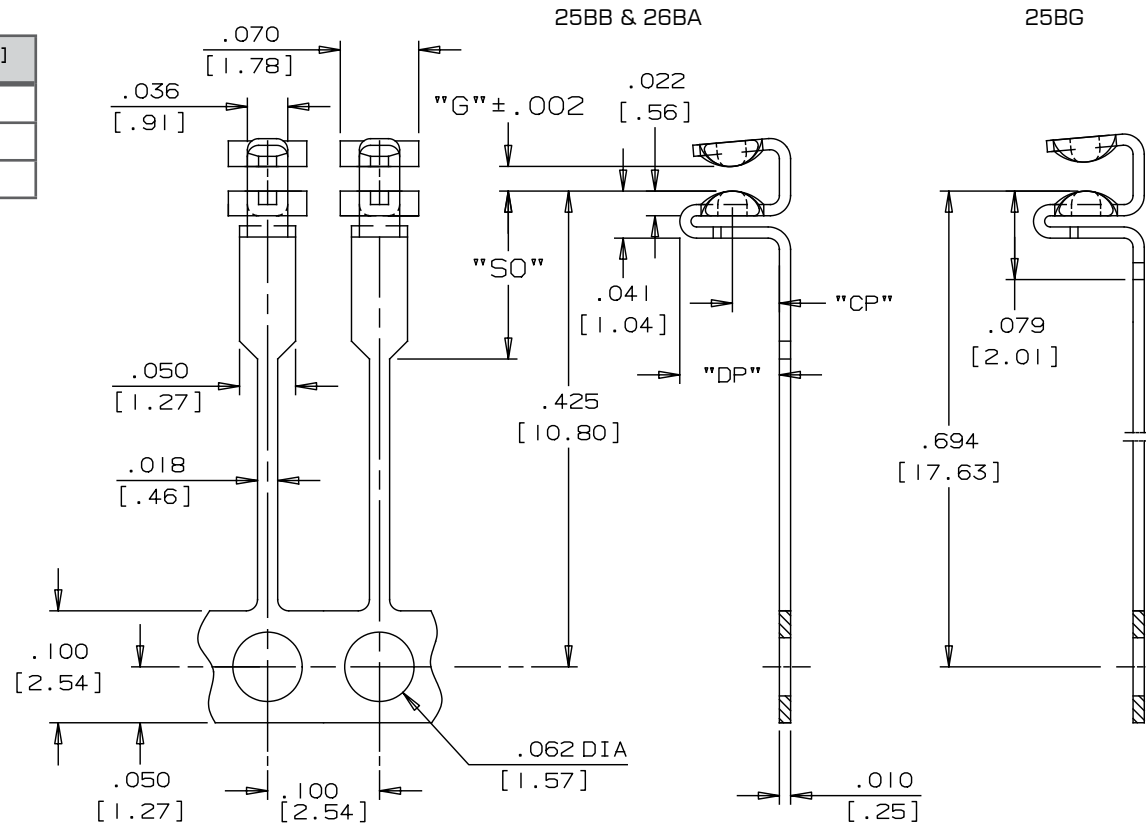


Drawing Nr.	„DP“ IN. [MM]	„CP“ IN. [MM]
25BB	0.089 [2.26]	0.042 [1.07]
25BG	0.089 [2.26]	0.042 [1.07]
26BA	0.078 [1.98]	0.036 [0.91]



www.interplexnas.de | www.interplex.com/NAS

SELECT SPECIFIC OPTIONS TO DETERMINE ORDERING CODE:

TYPE	PITCH (P)	DRWG. NO.	SOLDER LOCATION	GAP (G)	SOLDER TYPE	SOLDER STOP	STAND OFF (SO)	MATERIAL/ PLATING	STANDARD ORIENTATION
A = DIP	A = .100[2.54]	25BB 25BG 26BA	D = Double T = Top S = Bottom O = No Solder	22 = .022[0.558] 36 = .036[0.914] 46 = .046[1.17] 56 = .056[1.42]	See Chart on Page 9	O = No Stop S = Stop	E = .080[2.037] L = .150[3.81] T = .220 [5.59]	E = Phosphor Bronze Pre-Plated 100% Sn K = Phosphor Bronze Post-Plated 100% Sn C = Phosphor Bronze Pre-Plated Sn60/Pb40 H = Phosphor Bronze Post-Plated Sn60/Pb40	D = Winding (DD)

CODE: