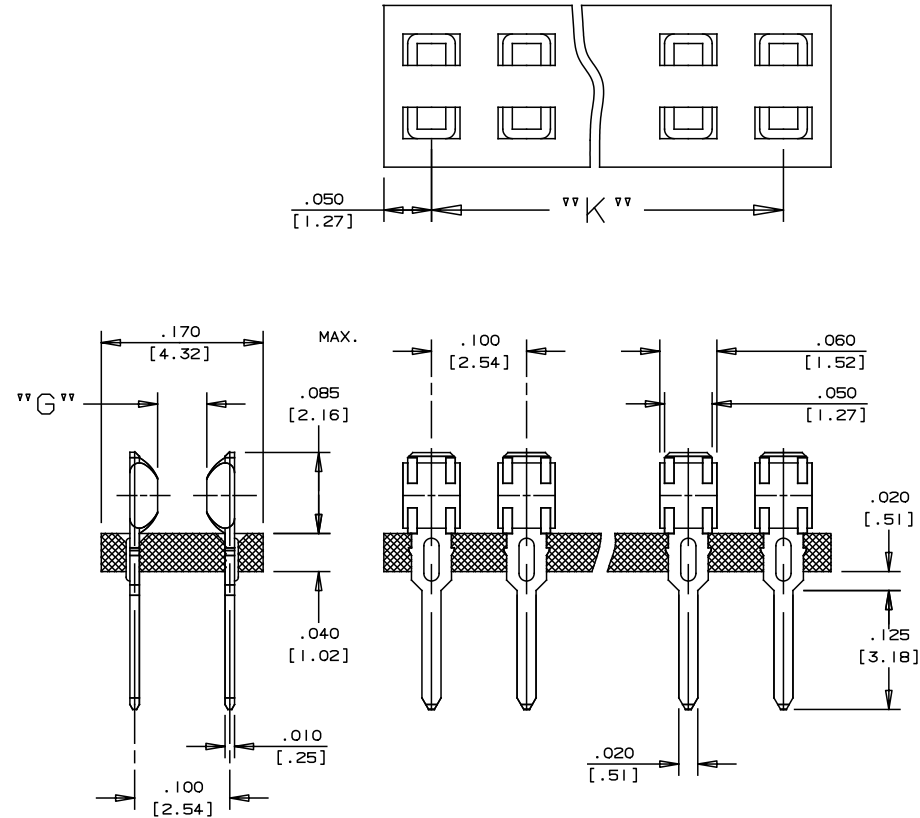


Drawing Nr.	Nr. of Pins	„K“ DIM IN. [MM]	Drawing Nr.	Nr. of Pins	„K“ DIM IN. [MM]
2510	10X2	0.900 [22.86]	2531	31X2	3.000 [76.20]
2511	11X2	1.000 [25.40]	2532	32X2	3.100 [78.74]
2512	12X2	1.100 [27.94]	2533	33X2	3.200 [81.28]
2513	13X2	1.200 [30.48]	2534	34X2	3.300 [83.82]
2514	14X2	1.300 [33.02]	2535	35X2	3.400 [86.36]
2515	15X2	1.400 [35.56]	2536	36X2	3.500 [88.90]
2516	16X2	1.500 [38.10]	2537	37X2	3.600 [91.44]
2517	17X2	1.600 [40.64]	2538	38X2	3.700 [93.98]
2518	18X2	1.700 [43.18]	2539	39X2	3.800 [96.52]
2519	19X2	1.800 [45.72]	2540	40X2	3.900 [99.06]
2520	20X2	1.900 [48.26]	2541	41X2	4.000 [101.60]
2521	21X2	2.000 [50.80]	2542	42X2	4.100 [104.14]
2522	22X2	2.100 [53.34]	2543	43X2	4.200 [106.68]
2523	23X2	2.200 [55.88]	2544	44X2	4.300 [109.22]
2524	24X2	2.300 [58.42]	2545	45X2	4.400 [111.76]
2525	25X2	2.400 [60.96]	2546	46X2	4.500 [114.30]
2526	26X2	2.500 [63.50]	2547	47X2	4.600 [116.84]
2527	27X2	2.600 [66.04]	2548	48X2	4.700 [119.38]
2528	28X2	2.700 [68.58]	2549	49X2	4.800 [121.92]
2529	29X2	2.800 [71.12]	2550	50X2	4.900 [124.46]
2530	30X2	2.900 [73.66]			



www.interplexnas.de | www.interplex.com/NAS

SELECT SPECIFIC OPTIONS TO DETERMINE ORDERING CODE:

TYPE	PITCH (P)	DRWG. NO.	SOLDER LOCATION	GAP (G)	SOLDER TYPE	SOLDER STOP	STAND OFF (SO)	MATERIAL/ PLATING	STANDARD ORIENTATION
E = DRI	A = .100[2.54]	25XX	D = Double	44 = .044[1.12] 56 = .056[1.42]	See Chart on Page 9	0 = No Stop S = Stop	0 = None	C = Phosphor Bronze Pre-plated 60/40 Tin Lead Finish E = Phosphor Bronze Pre-Plated 100% Sn Plastic = Liquid Crystal Vectra A-130	N/A

CODE: