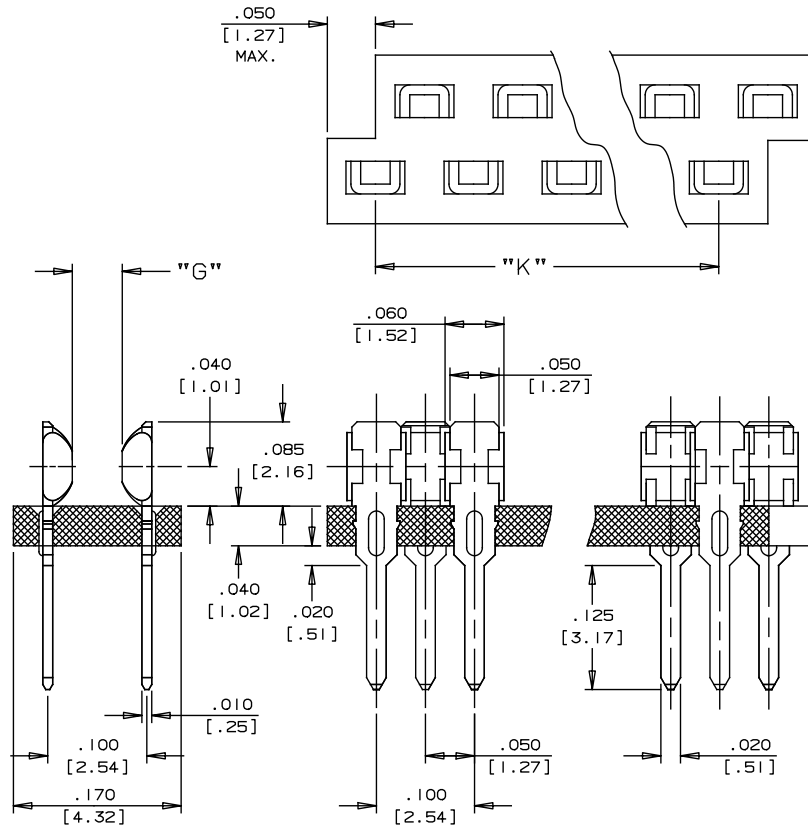


.100 [2.54] X .050 [1.27] OFFSET



Drawing Nr.	Nr. of Pins	„K“ DIM IN. [MM]	Drawing Nr.	Nr. of Pins	„K“ DIM IN. [MM]
2610	10X2	0.900 [22.86]	2631	31X2	3.000 [76.20]
2611	11X2	1.000 [25.40]	2632	32X2	3.100 [78.74]
2612	12X2	1.100 [27.94]	2633	33X2	3.200 [81.28]
2613	13X2	1.200 [30.48]	2634	34X2	3.300 [83.82]
2614	14X2	1.300 [33.02]	2635	35X2	3.400 [86.36]
2615	15X2	1.400 [35.56]	2636	36X2	3.500 [88.90]
2616	16X2	1.500 [38.10]	2637	37X2	3.600 [91.44]
2617	17X2	1.600 [40.64]	2638	38X2	3.700 [93.98]
2618	18X2	1.700 [43.18]	2639	39X2	3.800 [96.52]
2619	19X2	1.800 [45.72]	2640	40X2	3.900 [99.06]
2620	20X2	1.900 [48.26]	2641	41X2	4.000 [101.60]
2621	21X2	2.000 [50.80]	2642	42X2	4.100 [104.14]
2622	22X2	2.100 [53.34]	2643	43X2	4.200 [106.68]
2623	23X2	2.200 [55.88]	2644	44X2	4.300 [109.22]
2624	24X2	2.300 [58.42]	2645	45X2	4.400 [111.76]
2625	25X2	2.400 [60.96]	2646	46X2	4.500 [114.30]
2626	26X2	2.500 [63.50]	2647	47X2	4.600 [116.84]
2627	27X2	2.600 [66.04]	2648	48X2	4.700 [119.38]
2628	28X2	2.700 [68.58]	2649	49X2	4.800 [121.92]
2629	29X2	2.800 [71.12]	2650	50X2	4.900 [124.46]
2630	30X2	2.900 [73.66]			

DUAL ROW INTERCONNECTS

www.interplexnas.de | www.interplex.com/NAS

SELECT SPECIFIC OPTIONS TO DETERMINE ORDERING CODE:

TYPE	PITCH (P)	DRWG. NO.	SOLDER LOCATION	GAP (G)	SOLDER TYPE	SOLDER STOP	STAND OFF (SO)	MATERIAL/ PLATING	STANDARD ORIENTATION
E = DRI	A = .100[2.54]	26XX	D = Double	44 = .044[1.12] 56 = .056[1.42]	See Chart on Page 9	O = No Stop S = Stop	O = None	C = Phosphor Bronze Pre-plated 60/40 Tin Lead Finish E = Phosphor Bronze Pre-Plated 100% Sn Plastic = Liquid Crystal Vectra A-130	N/A

CODE:

--	--	--	--