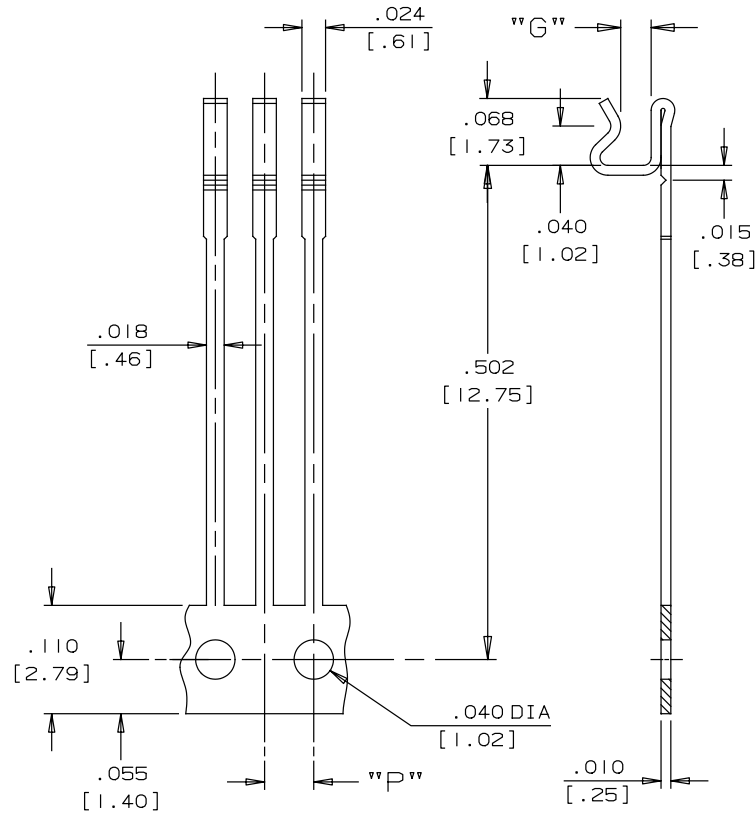


.050 [1.27] / .100 [2.54] PITCH

SHORTING CLIP INTERCONNECT

www.interplexnas.de | www.interplex.com/NAS



SELECT SPECIFIC OPTIONS TO DETERMINE ORDERING CODE:

TYPE	PITCH (P)	DRWG. NO.	SOLDER LOCATION	GAP (G)	SOLDER TYPE	SOLDER STOP	STAND OFF (SO)	MATERIAL/ PLATING	STANDARD ORIENTATION
D = SCI	A = .100[2.54] C = .050[1.27]	06AA	0 = No Solder	12 = .012[0.305] 22 = .022[0.56] 32 = .032[0.813] 36 = .036[0.914]	See Chart on Page 9	0 = No Stop S = Stop	0 = None	E = Phosphor Bronze Pre-Plated 100% Sn K = Phosphor Bronze Post-Plated 100% Sn C = Phosphor Bronze Pre-Plated Sn60/Pb40 H = Phosphor Bronze Post-Plated Sn60/Pb40	F = Winding (SB)

CODE:
