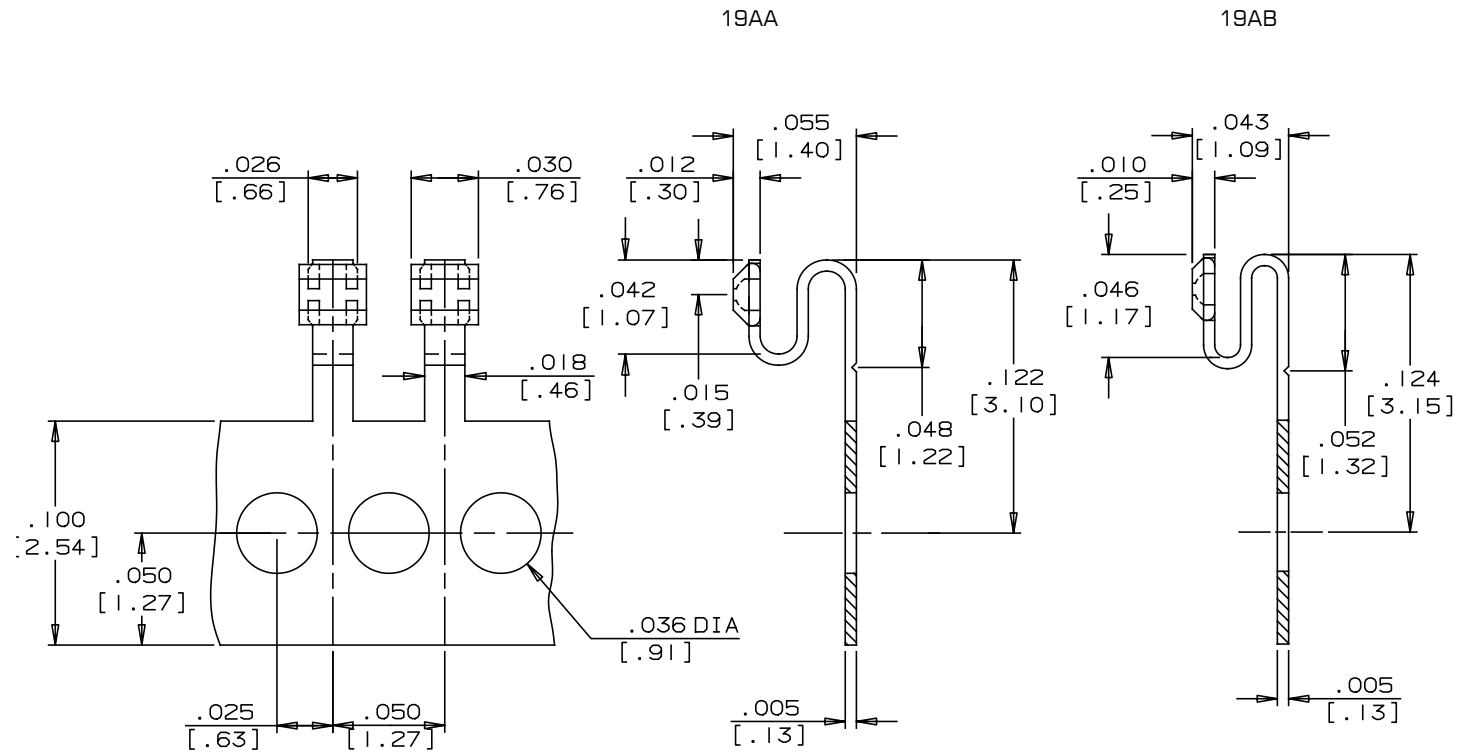


.050 [1.27] PITCH



www.interplexnas.de | www.interplex.com/NAS

SELECT SPECIFIC OPTIONS TO DETERMINE ORDERING CODE:

TYPE	PITCH (P)	DRWG. NO.	SOLDER LOCATION	GAP (G)	SOLDER TYPE	SOLDER STOP	STAND OFF (SO)	MATERIAL/ PLATING	STANDARD ORIENTATION
C = SMT	C = .050[1.27]	19AA 19AB	S = Bottom	00 = None	See Chart on Page 9	0 = No Stop S = Stop	X = See Drawing	M = Beryllium Copper Post-plated 63/37 Tin Lead Finish I = Beryllium Copper Post-Plated 100% Sn	H = Winding (SD)

CODE:

--	--	--	--	--	--	--	--	--	--

SURFACE MOUNT APPLICATION