

Rev	Description	Date	By
D	ADDED FINISH DESIGNATION 2	09/21/06	JSC

**PART NUMBER DESCRIPTION**

SVC 2 - - - 405 - 123 - 0

SERIES DESIGNATOR  
SVC - SHROUDED VERT HDR  
.100 SPACING

NUMBER OF ROWS  
2 - 2 ROW

POSITIONS PER ROW  
05, 08, 10, 12, 13,  
17, 20, 25, 30, 32

DESIGN VARIATION  
0 - STANDARD

SOLDER TAIL LENGTH  
.123 [3.13] (AS SHOWN)

SOLDER TYPE (SAC305)  
N - NO-CLEAN FLUX  
M - SOLID CORE

BODY HEIGHT  
.405 [10.27] (AS SHOWN)

CONTACT FINISH DESIGNATION $\triangleleft 2 \triangleleft 4$		
DESIGNATION	MATING ZONE	SOLDER TAIL
B	GOLD - 10 MICROINCHES	PURE TIN - 100 MICROINCHES
C	GOLD - FLASH	PURE TIN - 100 MICROINCHES
S	GOLD - FLASH	GOLD - FLASH
2	GOLD - 10 MICROINCHES	GOLD - 10 MICROINCHES

NOTES: UNLESS OTHERWISE SPECIFIED

1 INTERPRET THIS DRAWING IN ACCORDANCE WITH  
ASME Y14.5M - 1994

$\triangleleft 2$  FOR OTHER SIZES, FINISHES, SOLDER TAIL LENGTHS OR  
ADDITIONAL DATA CONSULT TEKA CUSTOMER SERVICE

$\triangleleft 3$  CONNECTOR SOLDER VOLUME BASED ON APPLICATION  
TO A  $.062 \pm .007$  [1.58  $\pm$  0.18] THICK PRINTED CIRCUIT  
BOARD

$\triangleleft 4$  ALL PURE TIN FINISHES ARE LOW STRESS /  
WHISKER MITIGATING.

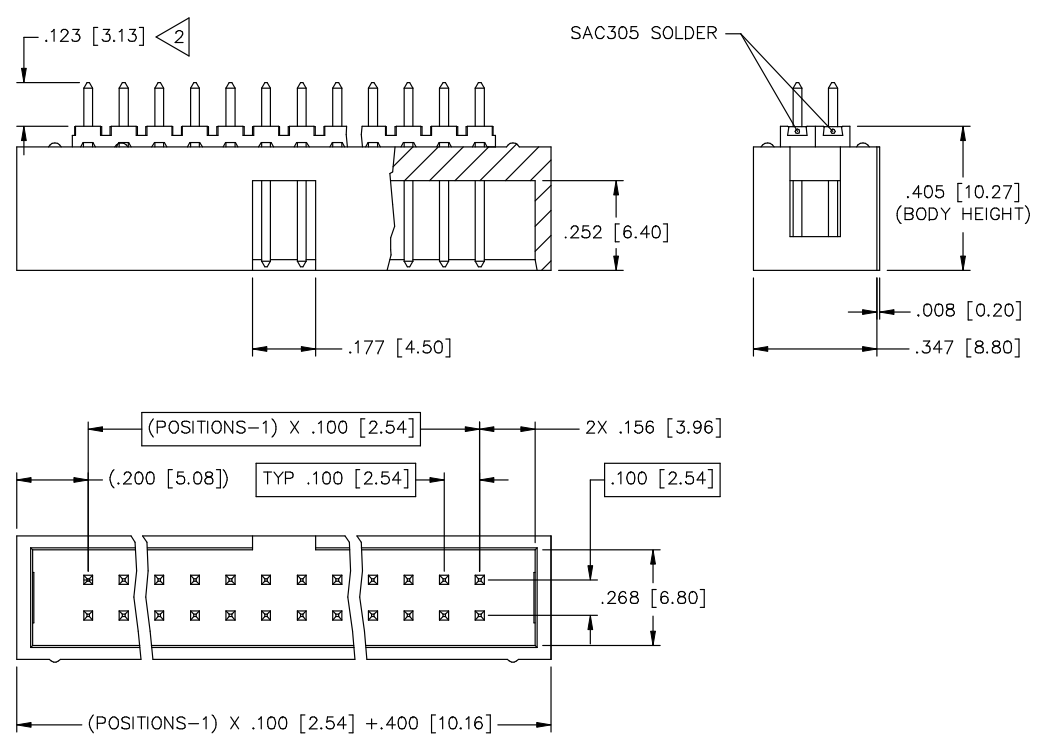
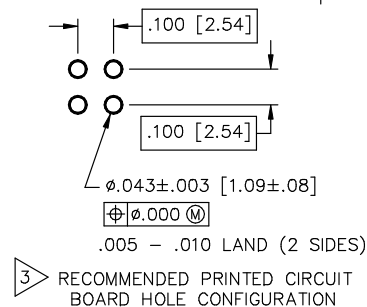
MATERIALS:


HOUSING: HIGH TEMPERATURE THERMOPLASTIC,  
UL RATED 94-V0

CONTACT: COPPER ALLOY

SOLDER: SEE PART NUMBER DESCRIPTION

CONTACT FINISH: (SEE PART NUMBER DESCRIPTION)



Unless otherwise specified: All dimensions are: Inches [mm]	Drawn by: J CACHINA	Date: 03/16/06	 AN INTERPLEX INDUSTRIES CO. 100 PIONEER AVE. WARWICK, R.I. 02888 TEL: (401) 785-4110 FAX: (401) 781-5730 E-MAIL: sales@teka.com
-Tolerances-	Checked by: JSC	Date: 03/16/06	
No of places IN [mm]	Title: SB SHRD VERT HDR - .100 [2.54] PITCH (ROHS COMPLIANT)		Part No: SVC2___405_123-0
one $\pm .1$ $\pm 2,54$	Ref No: S20608		Scale: 3:1
two $\pm .02$ $\pm 0,5$	Sheet 1 of 1		
three $\pm .010$ $\pm 0,25$			
Angular $\pm 2^\circ$			