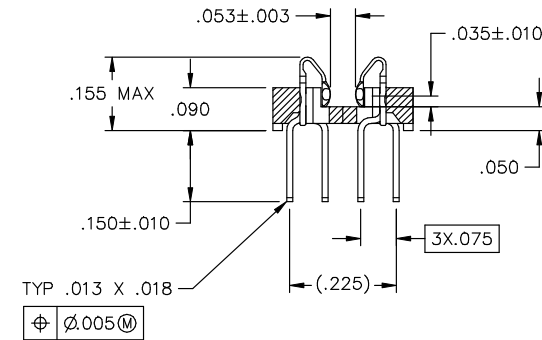
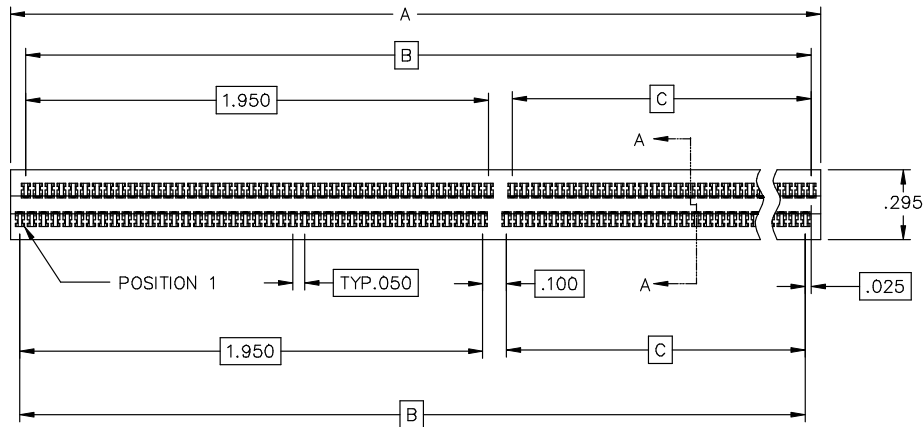
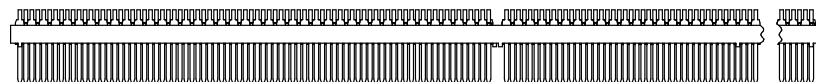


Rev	Description	Date	By
A	INITIAL RELEASE	10/31/05	JSC



TYPICAL SECTION A-A  
SCALE = 4:1




**MATERIALS:**

HOUSING: HIGH TEMPERATURE THERMOPLASTIC, UL RATED 94-V0

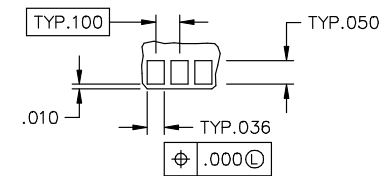
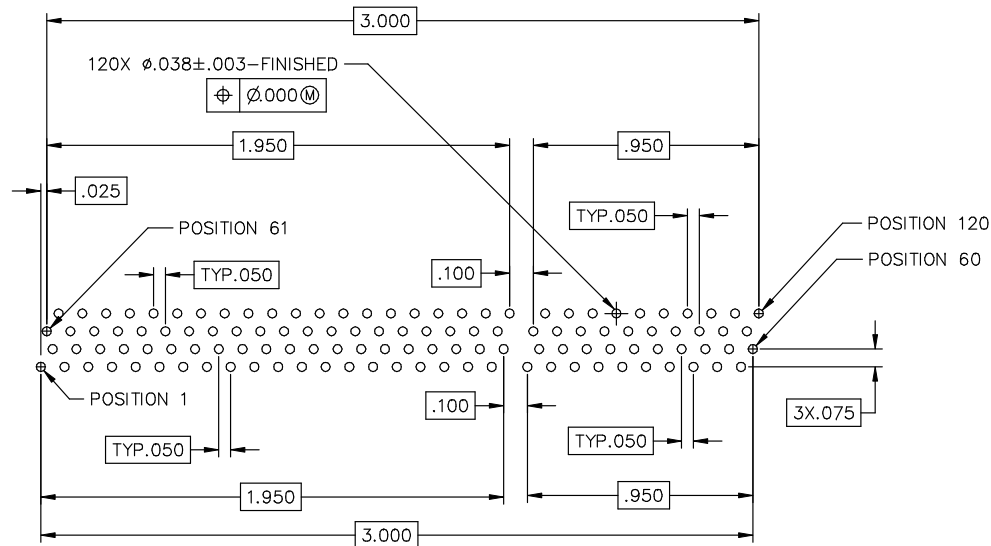
CONTACTS: ALLOY C76200 (NICKEL-SILVER) PRE-PLATED 150 MICROINCHES MIN PURE TIN (LOW STRESS - WHISKER MITIGATING) OVER 50 MICROINCHES MIN NICKEL

SOLDER: SOLID CORE 63-37 TIN-LEAD ALLOY

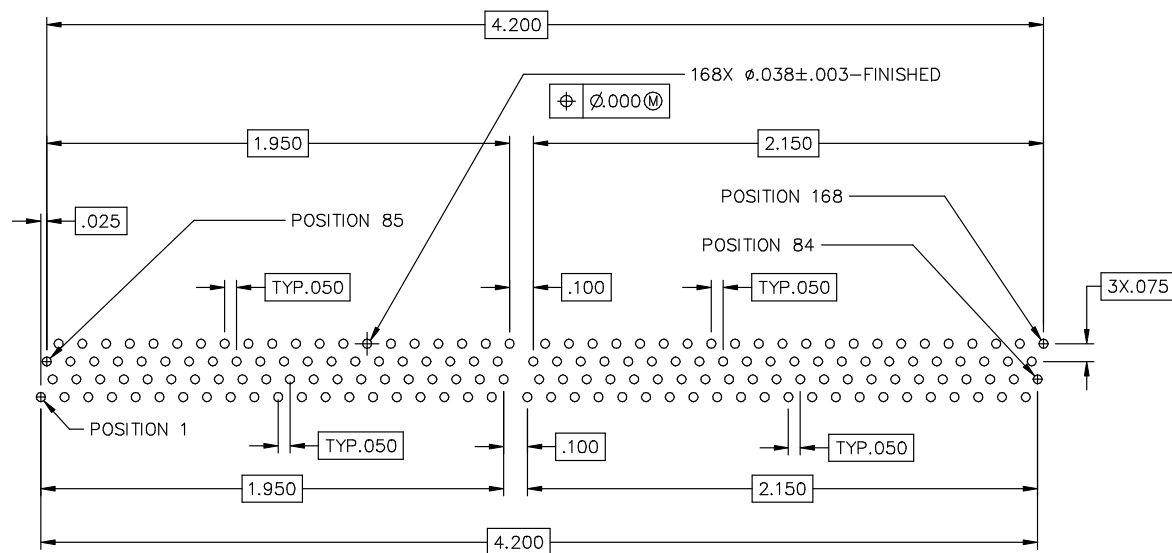
PART NO.	DESCRIPTION	A±.010	B	C
EC1441-D58U1-00S	170 POS OFFSET	4.305	4.200	2.105
EC1444-D58U1-00S	122 POS OFFSET	3.105	3.000	.950

Unless otherwise specified: All dimensions are: Inches [mm]	Drawn by:	Date:	 AN INTERPLEX INDUSTRIES CO. 100 PIONEER AVE. WARWICK, R.I. 02888 TEL: (401) 785-4110 FAX: (401) 781-5730 E-MAIL: sales@teka.com
	J CACHINA	10/31/05	
-Tolerances-	Checked by:	Date:	Part No: EC144_-D58U1-00S (SEE TABLE)
No of places IN [mm]	JSC	10/31/05	
one ±.1 ±2,54	Title:	2 X 84 QUAD ROW SBL SOCKET	Scale: 2:1
two ±.02 ±0,5	Ref No:	S20531	Sheet 1 of 2
three ±.005 ±0,13			
Angular ±1°			


Rev	Description	Date	By
A	ALL REVISIONS - SEE SHEET 1	10/9/06	JSC



RECOMMENDED MODULE LAYOUT



RECOMMENDED HOST CARD LAYOUT (COMPONENT SIDE)

Drawn by: J CACHINA	Date: 10/31/05	 AN INTERPLEX INDUSTRIES CO. <a href="http://www.tekais.com">HTTP://WWW.TEKAIS.COM</a>	100 PIONEER AVE. WARWICK, R.I. 02888 TEL: (401) 785-4110 FAX: (401) 781-5730 E-MAIL: <a href="mailto:sales@tekais.com">sales@tekais.com</a>
Checked by: JSC	Date: 10/31/05		Part No: EC144_-D58U1-00S (SEE TABLE)
Title: 2 X 84 QUAD ROW SBL SOCKET		Ref No: S20531	Scale: 2:1 Sheet 2 of 2