

Rev	Description	Date	By
A	INITIAL RELEASE	09/16/05	JSC

TABLE I - PC\104 PRODUCT DESCRIPTION				TABLE II - PC\104 FINISH DESCRIPTION (MICROINCHES)			
PART NUMBER	POSITIONS (2X)	A±.010	B	C±.010	FEMALE INTERFACE GOLD	MALE INTERFACE GOLD	SOLDER TAIL PURE TIN
PC206-A-1BD075-M	06	.620	.500	.075	20 MINIMUM	NOT APPLICABLE	100 MIN

NOTES: UNLESS OTHERWISE SPECIFIED

- 1 INTERPRET THIS DRAWING IN ACCORDANCE WITH ASME Y14.5M-1994
- 2 THIS PRODUCT CONFORMS TO ALL APPLICABLE PC\104 CONNECTOR SPECIFICATIONS.
- 3 FOR OTHER SIZES, FINISHES OR ADDITIONAL DATA CONTACT TEKA'S CUSTOMER SERVICE DEPARTMENT.

MATERIALS:

HOUSING: HIGH TEMPERATURE THERMOPLASTIC, UL RATED 94-V0
 CONTACT: PHOSPHOR BRONZE ALLOY
 SOLDER: SAC 305
 SOLDER CLIP: ALUMINUM ALLOY

CONTACT FINISH:

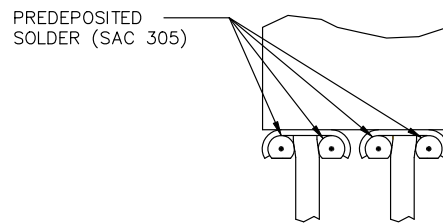
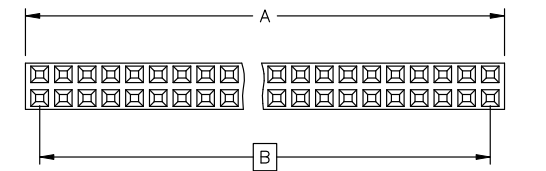
FEMALE INTERFACE: (SEE TABLE II)
 MALE INTERFACE: (SEE TABLE II)
 SOLDER TAIL: (SEE TABLE II)
 UNDERPLATE: 50 MICROINCHES MINIMUM NICKEL

PERFORMANCE CHARACTERISTICS - MECHANICAL

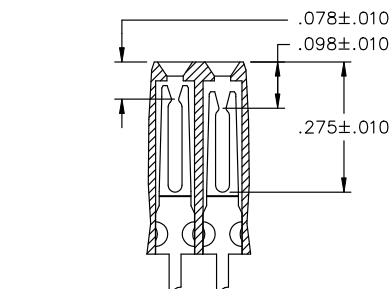
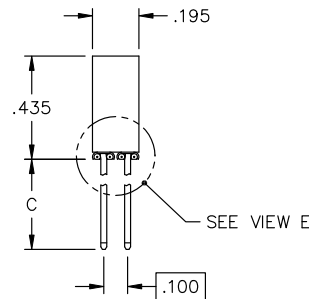
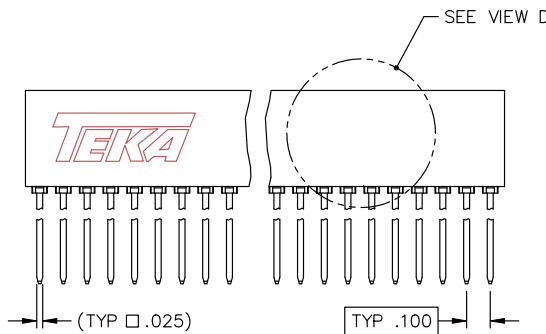
INSERTION FORCE: 2.5 OZ PER CONTACT MAX AVG
 WITHDRAWAL FORCE: 1 OZ MIN AVG
 NORMAL FORCE: 50 GRAMS MIN (PER BEAM) EOL
 DURABILITY: 25 CYCLES MINIMUM
 OPERATING TEMP: -55°C - 85°C

PERFORMANCE CHARACTERISTICS - ELECTRICAL

CONTACT RESISTANCE: 20 MILLIOHMS MAX INITIAL W/
 30 MILLIOHMS MAX AFTER TEST
 CURRENT CAPACITY: 3 AMPS MAX PER CONTACT
 DIELECTRIC STRENGTH: 1000 VAC
 INSULATION RESISTANCE: 10,000 MEGAOHMS MIN

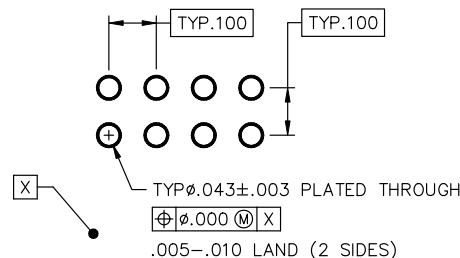


VIEW E - SCALE=8:1




VIEW D - SCALE=4:1

LOW INSERTION FORCES ARE ACHIEVED THROUGH A STEPPED INSERTION



RECOMMENDED HOST CARD HOLE CONFIGURATION

Unless otherwise specified: All dimensions are: Inches [mm] -Tolerances- No of places IN [mm] one ±.1 ±2,54 two ±.02 ±0,5 three ±.005 ±0,13 Angular ±1'	Drawn by: J CACHINA Date: 09/16/05	 AN INTERPLEX INDUSTRIES CO. HTTP://WWW.TEKAS.COM 100 PIONEER AVE. WARWICK, R.I. 02888 TEL: (401) 785-4110 FAX: (401) 781-5730 E-MAIL: sdes@tekais.com
	Checked by: JSC Date: 09/16/05	
Title: SOLDER BEARING RECEIPT - .100 PITCH (ROHS COMPLIANT)	Part No: PC206-A-1BD075-M	
	Ref No: S20563	Scale: 2:1 Sheet 1 of 1